

FW2-RPT-8F/9F

TWO WAY WIRELESS REPEATER MODULE



INSTALLATION INSTRUCTIONS

P/N 7102363_B

LEARNING PROCESS

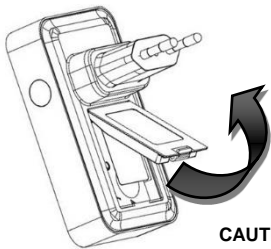
Please refer to your control panel installation.

1. Enter in installing mode via the "installer Webpage"
2. Go to Communication->RF and select the repeater 1-4 # you want to learn.
3. Insert Device's ID. (serial number)
4. Save Configuration.
5. Insert the SH-RPT into the AC plug (220V)
6. Registration proceed is starting, indicating by flashing RED led on the SH-RPT
7. Steady red LED and constant indicates registration successfully.\
8. If Red LED continues flashing more than 5 minutes and stopped. Please check RPT settings details, disconnect the RPT from AC plug (220V) and repeat step 5,6

BATTERY REPLACEMENT

The battery is located behind the cover on the back side of the device.

- Lift the cover locker
- Open the battery cover
- Pull out the old battery
- Insert new battery, verify the correct polarity
- Close the battery cover



CAUTION !!!

RISK OF EXPLOSION IF BATTERY IS REPLACED BY DIFFERENT TYPE / MODEL. PLEASE REFER TO YOUR INSTALLER

INTRODUCTION

The ISM band RF FW2-RPT extends your home alarm system data reception and the RSSI range of your connected devices.

It receives alarm, status and control messages from the wireless devices and sends these messages to the control panel.

It is supported by Crow's control panels and RF- Tx/Rx UART Modules.

FEATURES

- Extends the range of Two Way wireless devices
- AC powered with a six-hour battery back-up
- Secure ID 24 Bits encryption
- Continuously measures communication quality
- Low Battery, Supervision transmission
- Automatically Re-sync process if the panel didn't ACK to the RPT supervision
- Compact and Easy to install
- LED indications for activity and power failure
- Frequency Band: 868MHz / 916MHz

TESTING THE SH-RPT

After learning the SH-RPT into your control panel, it is recommended to proceed and check Transmission from RPT.

We suggest you to go to Overview level -> Repeaters section of your control panel and check the RSSI level.

See picture below

NOTE: RPT sends supervision message every 1 minute.

Repeaters		
#ID	Serial	RSSI
1	2894570	

TECHNICAL SPECIFICATIONS

Data Protocol	FW2 Protocol
Modulation Type	GFSK
Frequency band	868MHz /916MHz
Identification	Unique ID serial number – 24 bit
Events Supported from connected devices	Alarm, Tamper, Supervision, Low Bat
Event Transmission	Low Bat (from SH-RPT)
Supervision Time	Every 1 min
Range (open space)	500m
Operation	230 V AC,0.8A,50-60Hz
Battery Backup	3.7V/250mAh Li-Ion Rechargeable ~ 8 hours back up
Time to Charge	less than 24 hour
Low battery	3.7V
Cut off	2.8V
<u>Current Consumption</u>	
Average	<30 mA
Operating temperature	-10°C to +55°C
Dimensions	98mm x 55mm
Weight (incl. battery)	120 gr.

CROW ELECTRONIC ENGINEERING LTD. ("Crow") - WARRANTY POLICY CERTIFICATE

This Warranty Certificate is given in favor of the purchaser (hereunder the "Purchaser") purchasing the products directly from Crow or from its authorized distributor.

Crow warrants these products to be free from defects in materials and workmanship under normal use and service for a period of 24 months from the last day of the week and year whose numbers are printed on the printed circuit board inside these products (hereunder the "Warranty Period").

Subject to the provisions of this Warranty Certificate, during the Warranty Period, Crow undertakes, at its sole discretion and subject to Crow's procedures, as such procedures are from time to time, to repair or replace, free of charge for materials and/or labor, products proved to be defective in materials or workmanship under normal use and service. Repaired products shall be warranted for the remainder of the original Warranty Period. All transportation costs and in-transit risk of loss or damage related, directly or indirectly, to products returned to Crow for repair or replacement shall be borne solely by the Purchaser.

Crow's warranty under this Warranty Certificate does not cover products that is defective (or shall become defective) due to: (a) alteration of the products (or any part thereof) by anyone other than Crow; (b) accident, abuse, negligence, or improper maintenance; (c) failure caused by a product which Crow did not provide; (d) failure caused by software or hardware which Crow did not provide; (e) use or storage other than in accordance with Crow's specified operating and storage instructions.

There are no warranties, expressed or implied, of merchantability or fitness of the products for a particular purpose or otherwise, which extend beyond the description on the face hereof.

This limited Warranty Certificate is the Purchaser's sole and exclusive remedy against Crow and Crow's sole and exclusive liability toward the Purchaser in connection with the products, including without limitation - for defects or malfunctions of the products. This Warranty Certificate replaces all other warranties and liabilities, whether oral, written, (non-mandatory) statutory, contractual, in tort or otherwise.

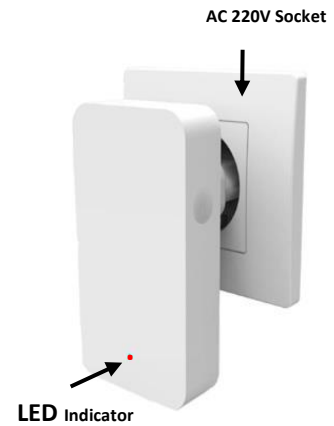
In no case shall Crow be liable to anyone for any consequential or incidental damages (inclusive of loss of profit, and whether occasioned by negligence of the Crow or any third party on its behalf) for breach of this or any other warranty, expressed or implied, or upon any other basis of liability whatsoever. Crow does not represent that these products can not be compromised or circumvented; that these products will prevent any person injury or property loss or damage by burglary, robbery, fire or otherwise; or that these products will in all cases provide adequate warning or protection.

Purchaser understands that a properly installed and maintained product may in some cases reduce the risk of burglary, fire, robbery or other events occurring without providing an alarm, but it is not insurance or a guarantee that such will not occur or that there will be no personal injury or property loss or damage as a result.

Consequently, Crow shall have no liability for any personal injury; property damage or any other loss based on claim that these products failed to give any warning.

If Crow is held liable, whether directly or indirectly, for any loss or damage with regards to these products, regardless of cause or origin, Crow's maximum liability shall not in any case exceed the purchase price of these products, which shall be the complete and exclusive remedy against Crow.

PRODUCT DESCRIPTION



AC 220V Socket

LED Indicator

PANEL CONTROL – OVERVIEW DISPLAY

The signals received from devices and passing through the SH-RPT can be displayed in the Overview-> in all sections: column R

MOTION TRANSMISSION TEST

Walk crossing in front of the detector will generate motion event transmission. Check the RSSI level indicated on the control panel display.

DELETE THE FW2-RPT

In case the SH-RPT should be removed from the installation, you just have to delete the registration from your control panel.

Please refer to your control panel manual to remove the SH-RPT from the configuration.

REGULATORY APPROVALS

The SH-RPT conforms to the essential requirements set out by:

- RTTE directive:1999/5/EC
- EMC directive: 2004/108/EC
- Low Voltage directive: 2006/95/EC

Harmonized Standards applicable to this products are:

- EN300220-2
- EN301489-3
- EN301489-1
- EN50130-4
- EN61000-6-3
- EN60950-1



12 Kineret Street.
Airport City, 70100 Israel

Tel. +972 3 9726000
Fax. +972 3 9726001

sales@crow.co.il
support@crow.co.il

www.thecrowgroup.com

These instructions supersede all previous issues in circulation prior to April 2018