

# NEO-PIR-CRT

## Digital Quad PIR Curtain Detector with Mirror Optics

The NEO-PIR-CRT mirror curtain detector provides solid curtain coverage of max 8m length by 3m height.

The NEO-PIR-CRT may be used for perimeter protection by setting up detection “curtains” along walls, windows, skylights. It can also be used as internal invisible barrier.

The Mirror detector NEO-PIR-CRT use varifocal mirror that improves the focus and the level of energy received by the Pyro Sensor.

The electronic of the detector is optimized to virtually eliminate false alarms

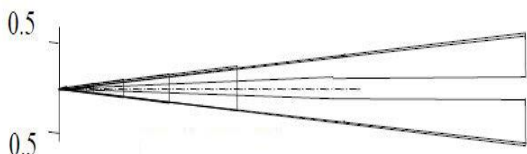
### FEATURES

- High Precision Mirror Optics
- Selectable detection coverage up to 8m
- Selectable detection range (4-6m or 6-8m)
- Solid curtain coverage
- Temperature compensation
- Dual element Pyro Sensor
- Advanced component technology
- Height installation calibrations free

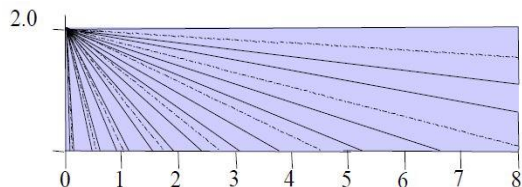


### DETECTION PATTERN

#### Top View



#### Side View



### SPECIFICATION

Detection Method	Dual element PIR + Mirror Optics
Power Input	9 to 16 VDC
Current Draw	Standby: 2 mA (± 5%) Active with LED: 3.5 mA (± 5%)
Alarm Output	N.C 28VDC 0.1 A with 10 Ohm series protection resistor
Tamper Switch	N.C 28VDC 0.1A with 10 Ohm series protection resistor - open when cover is removed
LED Indicators	LED is ON during alarm
Warm Up Period	20 sec (± 5sec)
Operating Temperature	-20°C to 50°C
RFI Protection	10V/m 10 - 1000MHz
Dimensions	70mm x 35mm x 36mm
Weight	40grs
Part Number	0017860

### STANDARDS COMPLIANCE

EN50130-4

EN50131-1, EN50131-2-2

Security Grade 2, Environmental Class II