

SH-RPT

TWO WAY WIRELESS ™ REPEATER MODULE FOR SHEPHERD



ELECTRONIC ENGINEERING LTD

INSTALLATION INSTRUCTIONS

P/N 7102363 REV.A DZ

LEARNING PROCESS

Please refer to your control panel installation manual to learn the SH-RPT

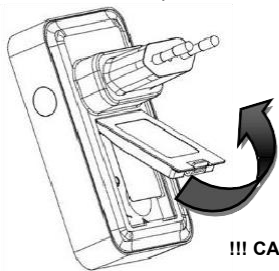
On Shepherd™ panel, the SH-RPT has to be learnt using its unique ID through the installer webpage in "Communication" area"

1. Log into installer webpage and go to "Communication" tab"
2. Fill the serial ID of the SH-RPT and submit the configuration
3. Plug the SH-RPT into AC (220V)
4. Red LED blinking during the pairing process
5. Red LED will fix during 2 seconds when the registration complete

BATTERY REPLACEMENT

The battery is located behind the cover on the back side of the device

- Lift the cover locker
- Open the battery cover
- Pull out the old battery
- Insert new battery, verify the correct polarity
- Close the battery cover



!!! CAUTION

RISK OF EXPLOSION IF BATTERY IS REPLACED BY DIFFERENT TYPE / MODEL
PLEASE REFER TO YOUR INSTALLER

INTRODUCTION

The SH-RPT extends your home alarm system data reception and the RSSI range of your connected devices

It receives alarm, status and control messages from the wireless devices and sends these messages to the control panel

It is supported by Crow's Shepherd™ control panels and compatible UART Modules

FEATURES

- Extends the range of Two Way wireless devices
- AC powered with a six-hour battery back-up
- Secure ID 24 Bits encryption
- Continuously measures communication quality
- Compact and Easy to install
- LED indications for activity and power failure
- Tamper protected
- Available in several frequencies and Voltages
- Frequency Band: 868MHz

TESTING THE SH-RPT

After learning the SH-RPT into your control panel, it is recommended to proceed with Transmission and Walk tests

We suggest you to refer to the "Walk Test Mode" section of your control panel installation manual

SH-RPT TRANSMISSION TEST

Push on the "RSSI Test button" located on the right side of the SH-RPT to initiate a transmission from the device to the control panel

Check the RSSI level indicated on the control panel display of your control panel to verify the radio reception level

TECHNICAL SPECIFICATIONS

Data Protocol	FW2 Protocol
Modulation Type	GFSK (5 frequencies)
Frequency band	868MHz
Identification	Unique ID serial number – 24 bit
Events Supported from connected devices	Alarm, Tamper, Supervision Low Bat
Event Transmission	Low Bat (from SH-RPT)
Supervision Time	min (by default) 7
Range (open space)	500m
Operation	AC 220 Volts
Battery Backup	250mAh Li-Ion Rechargeable/3.7V hours back up 8 ~
Current Consumption	
Average	mA 30>
Operating temperature	-10°C to +55°C
Dimensions	98mm x 55mm
Weight (incl. battery)	120 gr

CROW ELECTRONIC ENGINEERING LTD. ("Crow") - WARRANTY POLICY CERTIFICATE

This Warranty Certificate is given in favor of the purchaser (hereunder the "Purchaser") purchasing the products directly from Crow or from its authorized distributor

Crow warrants these products to be free from defects in materials and workmanship under normal use and service for a period of 24 months from the last day of the week and year whose numbers are printed on the printed circuit board inside these products (hereunder the "Warranty Period") Subject to the provisions of this Warranty Certificate, during the Warranty Period, Crow undertakes, at its sole discretion and subject to Crow's procedures, as such procedures are from time to time, to repair or replace, free of charge for materials and/or labor, products proved to be defective in materials or workmanship under normal use and service. Repaired products shall be warranted for the remainder of the original Warranty Period. All transportation costs and in-transit risk of loss or damage related, directly or indirectly, to products returned to Crow for repair or replacement shall be borne solely by the Purchaser

Crow's warranty under this Warranty Certificate does not cover products that is defective (or shall become defective) due to: (a) alteration of the products (or any part thereof) by anyone other than Crow; (b) accident, abuse, negligence, or improper maintenance; (c) failure caused by a product which Crow did not provide; (d) failure caused by software or hardware which Crow did not provide; (e) use or storage other than in accordance with Crow's specified operating and storage instructions

There are no warranties, expressed or implied, of merchantability or fitness of the products for a particular purpose or otherwise, which extend beyond the description on the face hereof

This limited Warranty Certificate is the Purchaser's sole and exclusive remedy against Crow and Crow's sole and exclusive liability toward the Purchaser in connection with the products, including without limitation - for defects or malfunctions of the products. This Warranty Certificate replaces all other warranties and liabilities, whether oral, written, (non-mandatory) statutory, contractual, in tort or otherwise

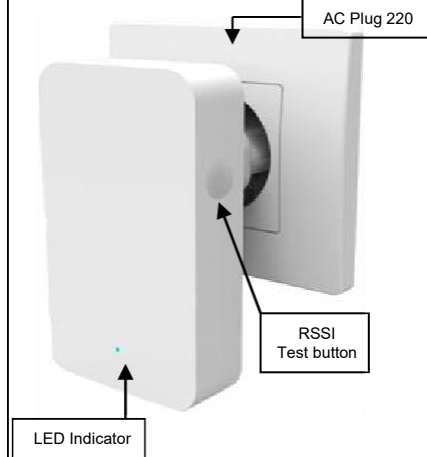
In no case shall Crow be liable to anyone for any consequential or incidental damages (inclusive of loss of profit, and whether occasioned by negligence of the Crow or any third party on its behalf) for breach of this or any other warranty, expressed or implied, or upon any other basis of liability whatsoever. Crow does not represent that these products can not be compromised or circumvented; that these products will prevent any person injury or property loss or damage by burglary, robbery, fire or otherwise; or that these products will in all cases provide adequate warning or protection

Purchaser understands that a properly installed and maintained product may in some cases reduce the risk of burglary, fire, robbery or other events occurring without providing an alarm, but it is not insurance or a guarantee that such will not occur or that there will be no personal injury or property loss or damage as a result

Consequently, Crow shall have no liability for any personal injury; property damage or any other loss based on claim that these products failed to give any warning

If Crow is held liable, whether directly or indirectly, for any loss or damage with regards to these products, regardless of cause or origin, Crow's maximum liability shall not in any case exceed the purchase price of these products, which shall be the complete and exclusive remedy against Crow

PRODUCT DESCRIPTION



DELETE THE SH-RPT

In case the SH-RPT should be removed from the installation, you just have to delete the registration info into your control panel

Please refer to your control panel installation manual to learn the SH-RPT

On Shepherd™ panel, the SH-RPT has to be learnt using its unique ID through the installer webpage in "Communication" area"

1. Log into installer webpage and go to "Communication" tab"
2. Remove the serial ID of the SH-RPT and submit the configuration

REGULATORY APPROVALS

The SH-RPT conforms to the essential requirements set out by

- RTTE directive: 2014/53/EU
- EMC directive: 2014/30/EU
- LVD directive: 2014/35/EU
- RoHS2 directive: 2011/65/EU

Harmonized Standards applicable to this products are

- EN300220-2
- EN301489-3
- EN301489-1
- EN50130-4:2011
- EN61000-6-3
- EN60950-1



Kineret Street 12
Airport City, 70100 Israel

Tel. +972 3 9726000
Fax. +972 3 9726001

sales@crow.co.il
support@crow.co.il

www.thecrowgroup.com

These instructions supersede all previous issues in circulation prior to May 2018