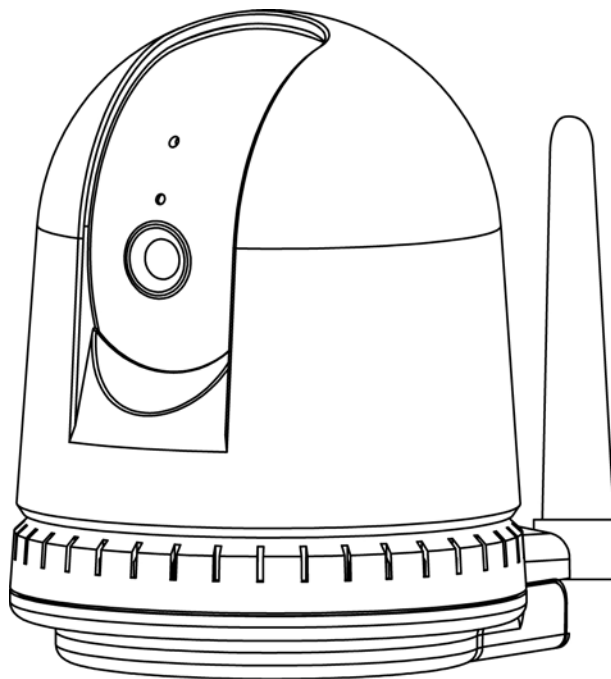




WizeCam Quick Start Guide

Network/IP Camera

with WiFi



Version No.: 3.0V

Please read this user manual carefully before using the product.

Licensing Notice

The software and /or product described in this manual are furnished under a License and Limited Warranty Agreement and may be used online in accordance with the terms of that agreement.

Copyright © Video Domain Technologies Ltd. 2005

The information in this manual was accurate and reliable at the time of its release. However, Video Domain Technologies Ltd. reserves the right to change the specifications of the product described in this manual without notice at any time. As such, the descriptions and data included in this document may not be current. Video Domain Technologies Ltd. assumes no responsibility for any inconsistencies between the actual product and this manual's description of it. Any party electing to use this manual does so with the full knowledge of the possibility of such inconsistencies and takes full responsibility for any consequences that may arise while installing and/or using this product.

Video Domain Technologies Ltd. holds the copyright to this manual. All rights are reserved. No part of this publication may be reproduced or transmitted in any form or by any means without prior written consent from Video Domain Technologies Ltd.

Registered Trademarks

MemoCam is a registered trademark of Video Domain Technologies Ltd. All other proprietary names mentioned in this manual are the trademarks of their respective owners.

Disclaimer

Video Domain Technologies Ltd. makes no warranties regarding the content of this document. Video Domain Technologies Ltd. reserves the right to alter, modify and revise the specification without notice. Video Domain Technologies Ltd. assumes no responsibility for any errors contained herein.

The customer should note that in the field of multimedia there are a number of patents held by various parties. It is the responsibility of the user to assure that a particular implementation does not infringe on those patents. Video Domain Technologies Ltd. does not indemnify the user from any patent or intellectual property infringement.

VDT Internet Support Services

To ensure customer satisfaction, Video Domain Technologies Ltd. has established VDT Internet Support Services to process customer inquiries. Please e-mail: support@vdomain.com

For product information including driver and manual updates, refer to:

www.vdomain.com

Document Version 031

September 2006

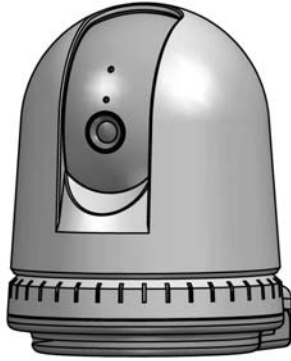
Video Domain Technologies Ltd.

Contents

PACKING LIST	1
STRUCTURE	2
. SETTING PARAMETER OF IP CAMERA.....	5
SEARCH NETWORK ADDRESS AND MODIFY PARAMETER.....	6
DOWNLOAD AND INSTALL THE PLUG-INS.....	13
LOGIN VISIT.....	14
INSTALLATION.....	14
FAQ.....	15
FCC INFORMATION.....	bottom

Packing List

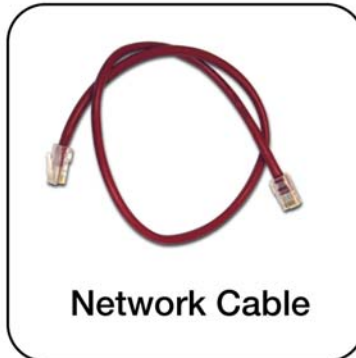
IP Camera



Bracket



Antenna



Network Cable



Audio I/O Cable



Power Adapter



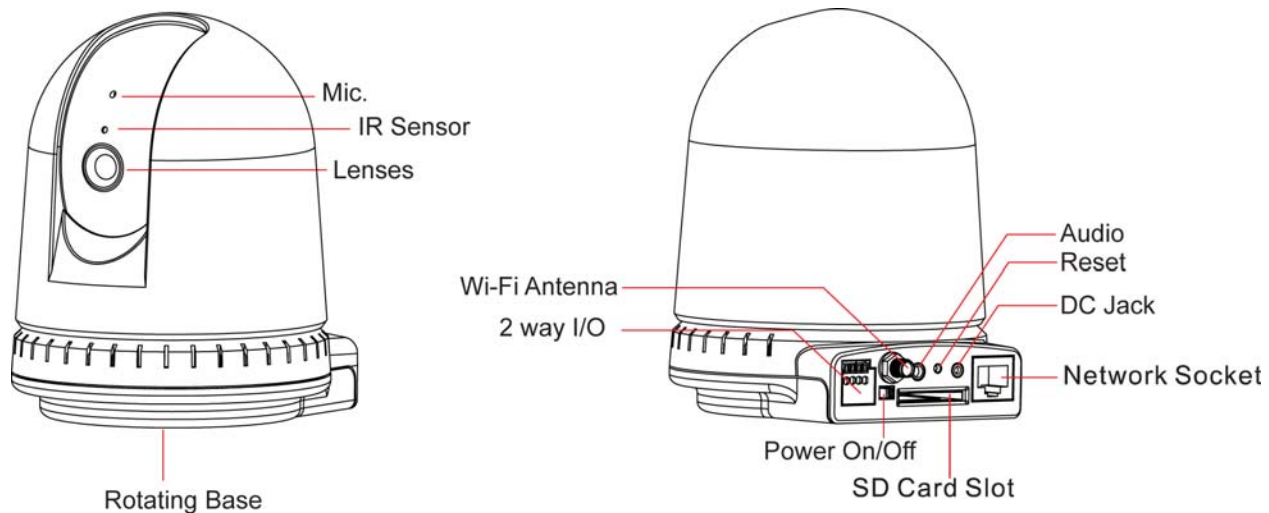
CD-ROM



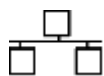
SD Card

NOTE: the pictures are for reference only,

STRUCTURE



Description of rear panel connection:



: Ethernet interface



: SD memory card slot

OFF/ON : Power switch (ON: turns on; OFF: turns off)

DC5V : Power input, DC 5V/2A

AUDIO : Audio input / output, AUDIO IN is yellow and AUDIO OUT is in red



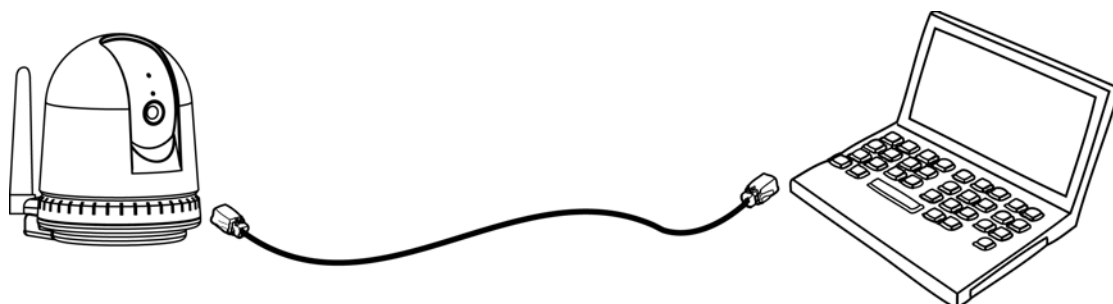
: Reset Button. Press this button to reset to factory default settings. Use this button only when necessary.

SETTING PARAMETER OF IP CAMERA

If it is the first time to use the IP Camera to set the parameter by PC, there are three modes as following:

Connection mode ①:

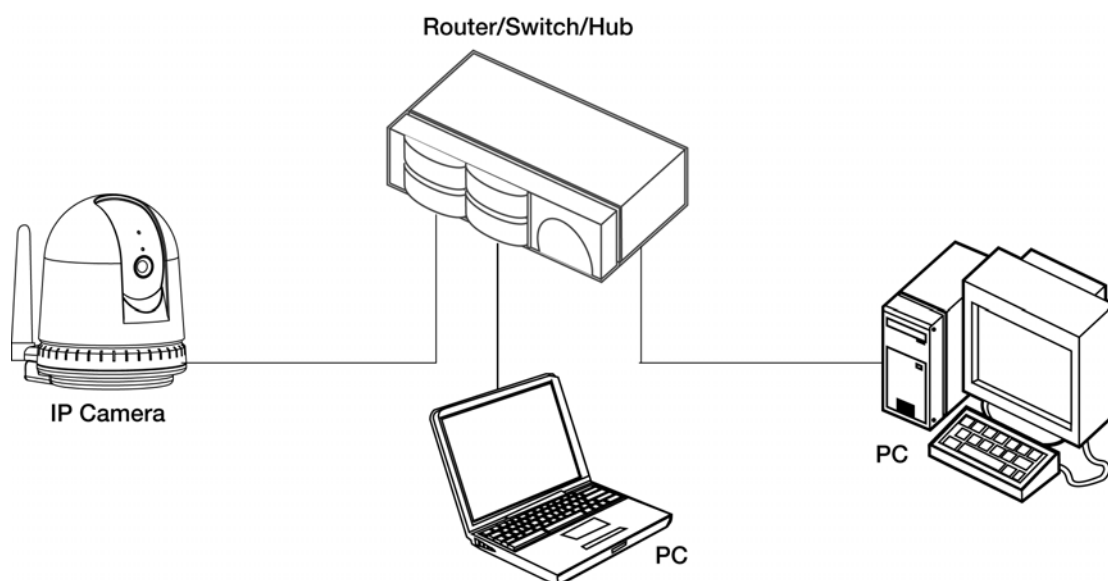
Connect the IP Camera to PC with the network cable.



- (1) Connect the IP Camera to PC with network cable;
- (2) Network indicator will be blink in green in 5 seconds, which indicates connection finished.

Connection mode ②:

Connect the IP Camera through the LAN interface of the Switch/DSL Router or a Hub.

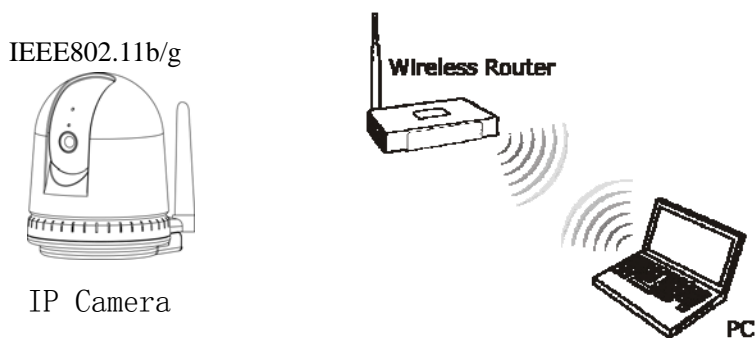


(1) Connect the RJ45 network port of the IP Camera to the LAN interface of the Switch/DSL Router or a Hub with the network cable.

(2) Connect the power adapter provided with the product to the power socket of the IP Camera and then connect to the mains supply.

Connection mode ③:

This configuration is using WiFi module, supporting wireless connectivity, with wireless AP devices (such as wireless routers), and wireless LAN components. The WiFi function is off by factory default. The user needs to turn it on and complete the related WiFi setting in the wired connection's environment (refers to Connection mode ① and connection model ②). Please refer to the User Manual in the CD-ROM.

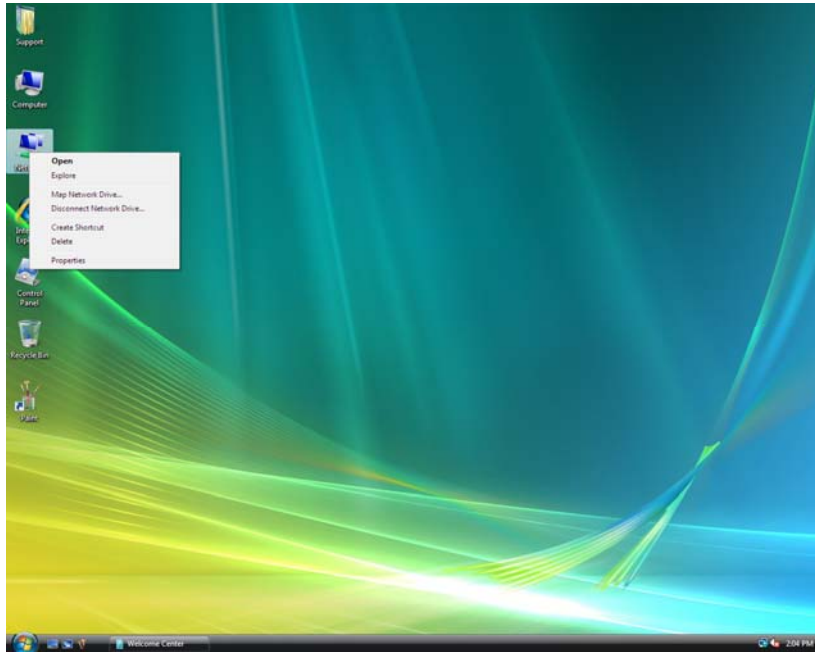


SEARCH NETWORK ADDRESS AND MODIFY PARAMETER

Network settings in computer

(I) If operating system of your PC is Microsoft windows **Vista**:

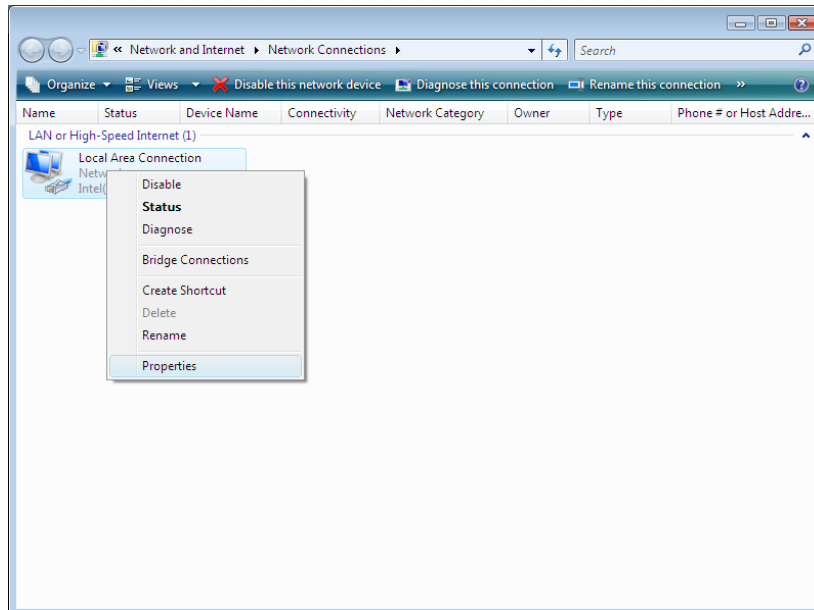
1. Right click **<Network>** icon on the desktop as following:



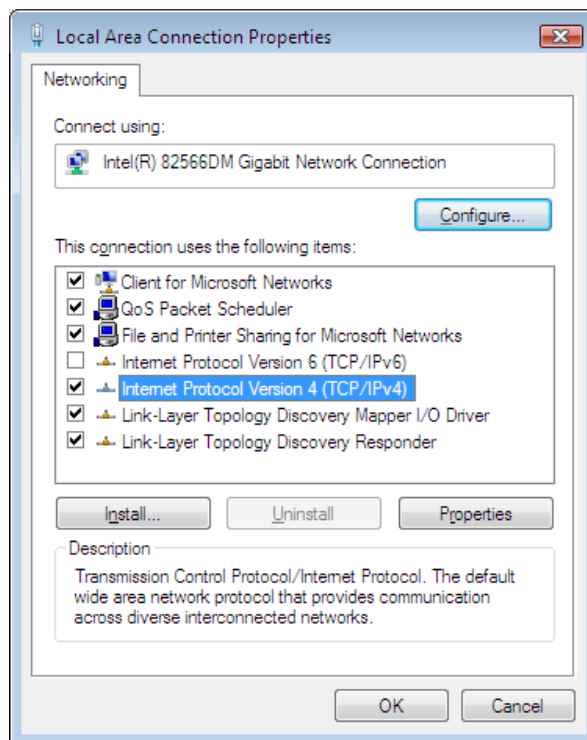
2. Click **<Properties>**, enter **<Network and Sharing Center>** interface as following:



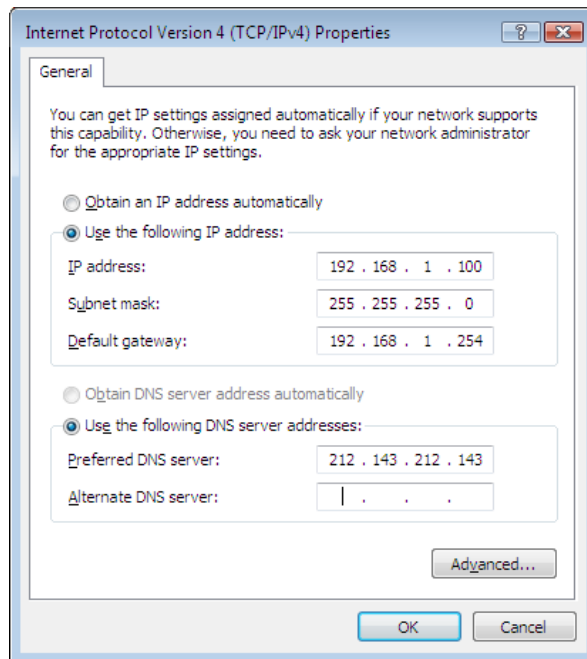
3. Double click **<Manage network connections>**, enter **<Network Connections>** then the following screen appears:



4. Right click **<Local Area Connection>**, then click **<Properties>**, enter **<Local Area Connection Properties>** then the following screen appears:



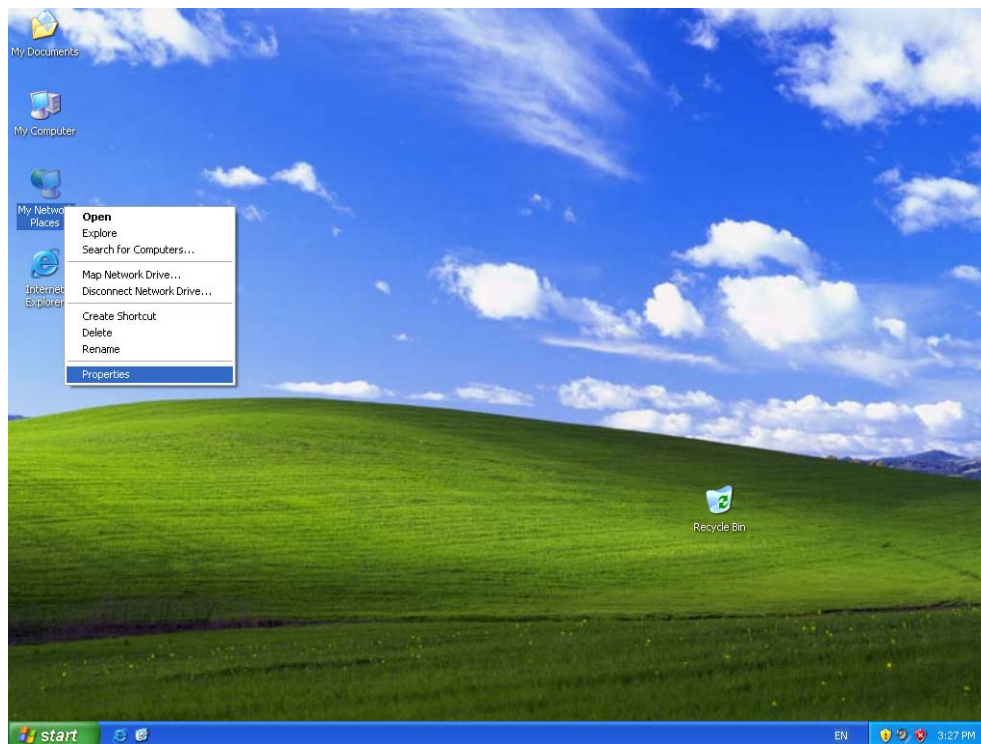
5. Note: IP Camera does not support IPV6 Protocol Version 6, please cancel the **<Inter Protocol Version 6(TCP/IPV6)>**, then select and double click **<Internet Protocol Version 4 (TCP/IPV4)>**.



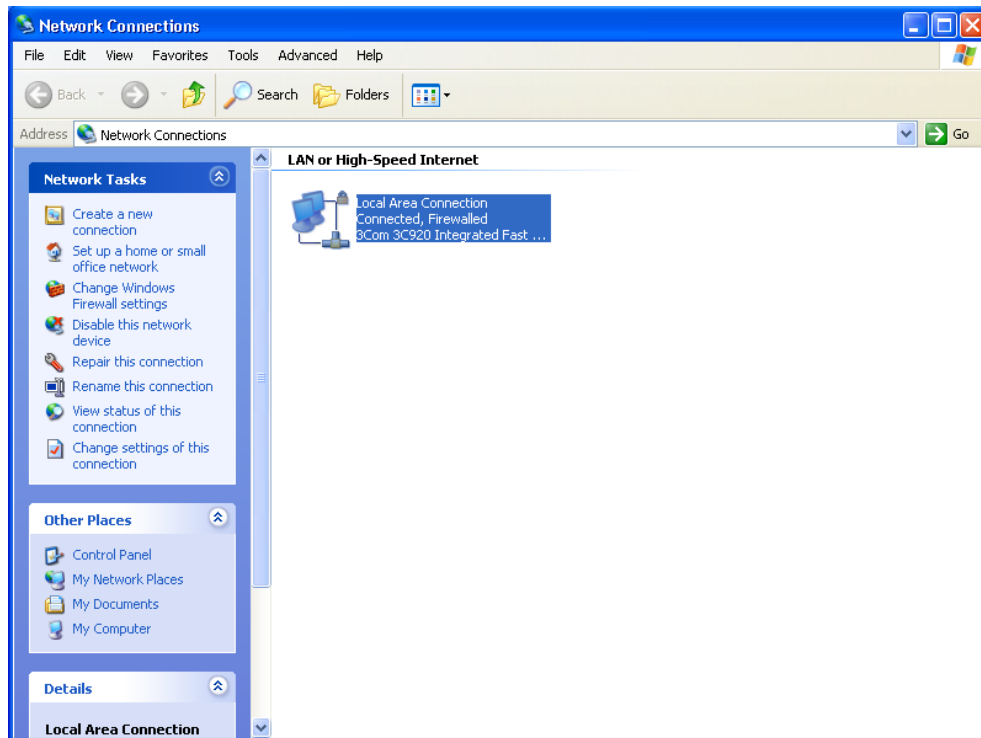
6. Manually set the IP address of your PC in the LAN, eg: 192.168.1.100, other settings can refer to the figure above.

(II) If Operating System of your PC is Microsoft Windows XP or Windows 2000:

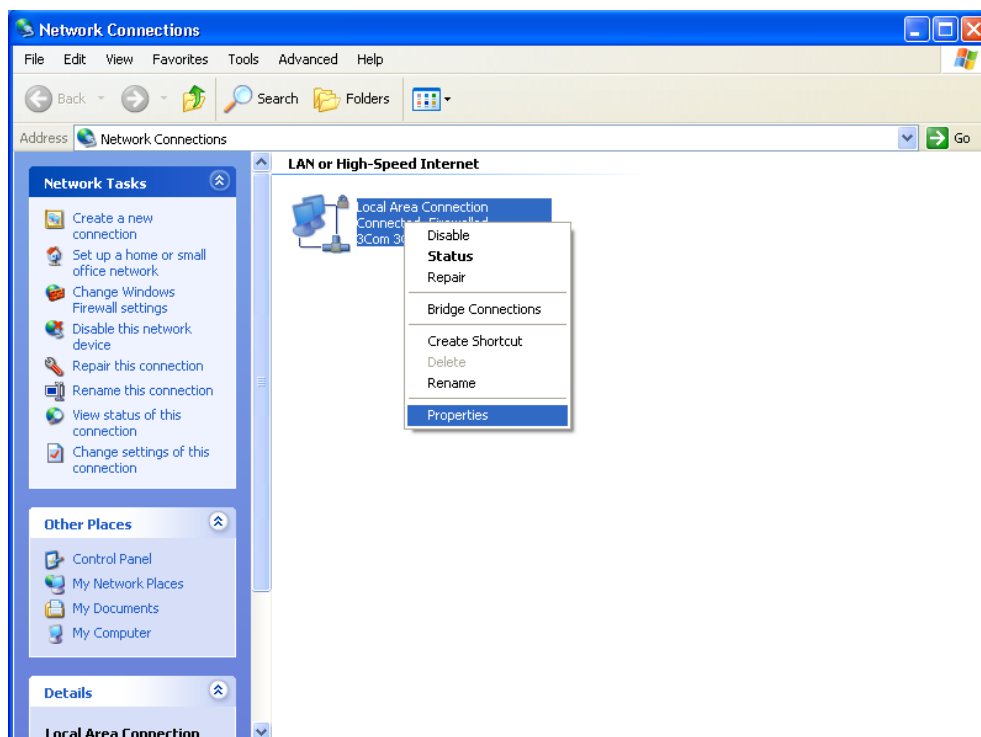
1. Right click **<Network>** icon as following:



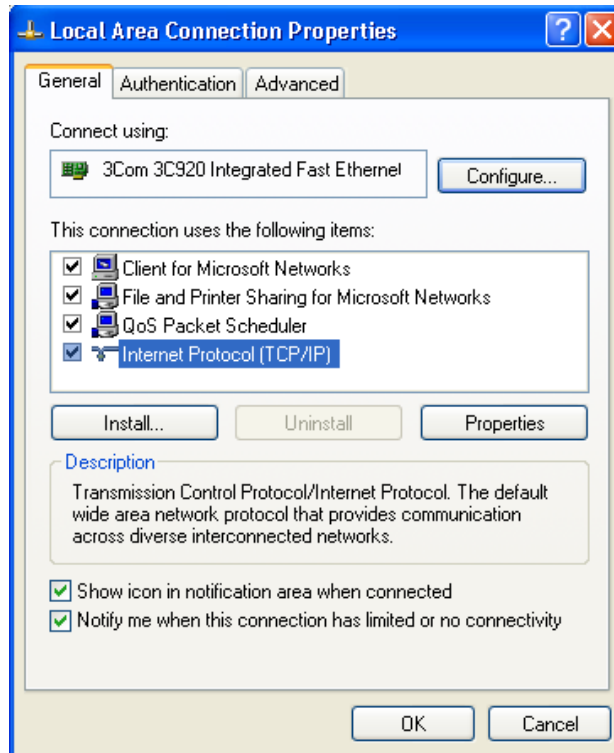
2. Click **<Properties>** as following:



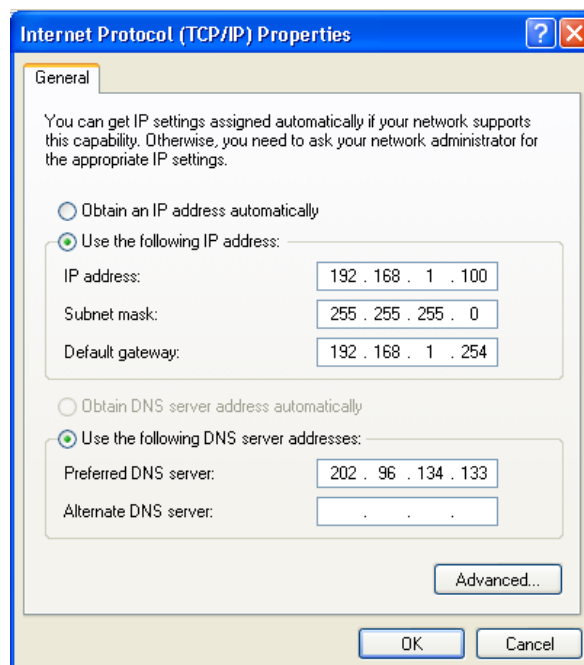
3. Right click **<Local Area Connection>** as following:



4. Click **<Properties>** as following:



5. Double click **<Internet Protocol (TCP / IP)>** as following:



6. Set the LAN address of your PC, such as: 192.168.1.100, other parameters as above.

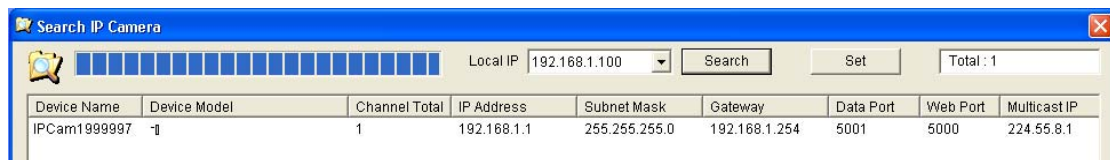
Default Parameters

IP address: 192.168.1.1
Subnet mask: 255.255.255.0
Gateway: 192.168.1.254
COM port: 5000
Web port: 80
User name: admin
Password: admin

Use the Search DVS Software to Search IP Camera in the LAN and Setting IP Address for IP Camera

Use the Search DVS Software to Search IP Camera in the LAN

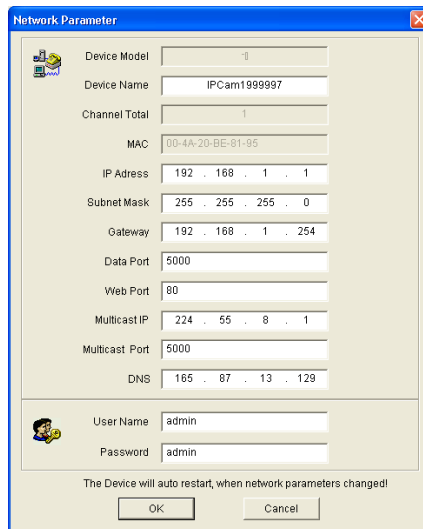
1. Insert the CD provided with the WizeCam/IP Camera in the CD-ROM drive of the PC and copy the configuration tool **SearchIPCamera.exe** to your PC. Double click the file to run the software. The following screen appears:



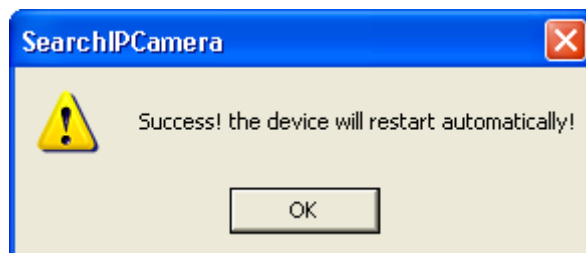
2. **<Local IP>** displays the local IP address of the computer. If there are more than one Ethernet cards in the computer, or, more than one IP address, please choose anyone of them to connect to the camera.
3. Click **<Search>** to search a new IP camera in the LAN.
4. The window will display a list of network/IP cameras available on the local network. Choose the one you want to define and modify the settings. The name of camera will be displayed as **IPCam 1500432**.

Setting IP Address for IP Camera

1. In order to make the connection, the IP address of the PC and that of the IP Camera must be in the same network section. If you do not want to change the IP address of the PC, it is required to reset the IP address of the IP Camera.
2. Select the IP Camera to access and click **<Set>**, or double click the IP Camera to set the IP address information, as shown in the figure below:



3. After modifying network parameters, click **<OK>**, the system will display the following prompt, then click **<OK>**, and then IP Camera will restart automatically:



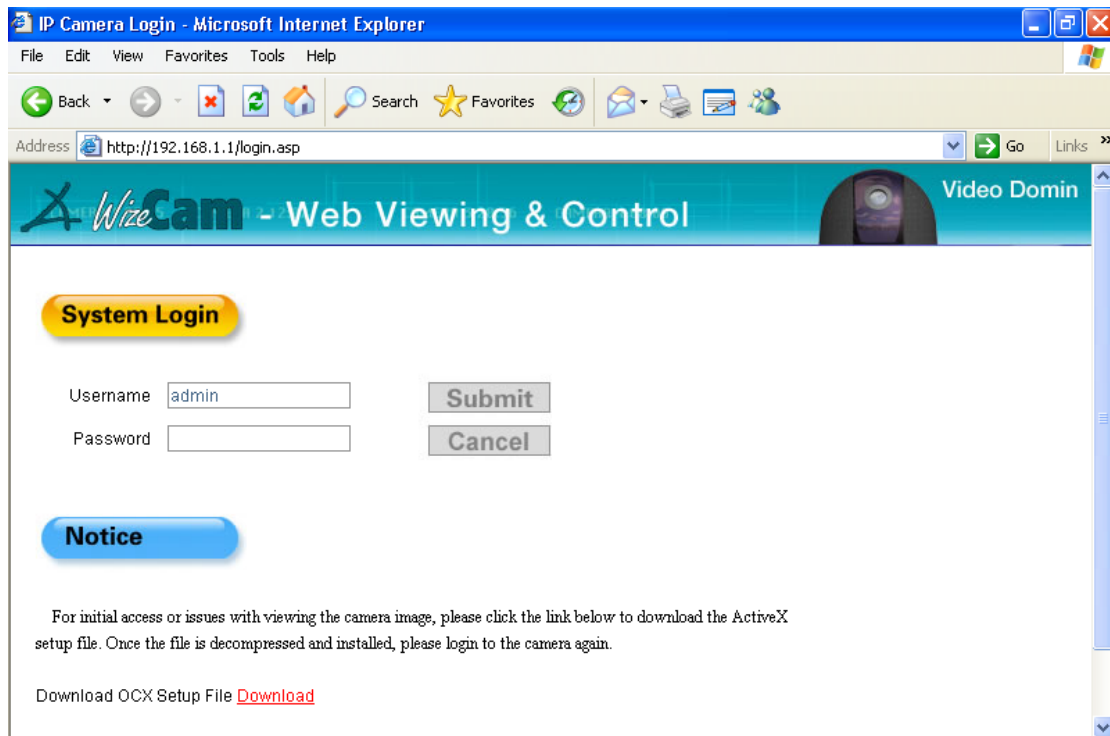
Use the Search DVS to Search & Set the IP Camera

Also we provide Search DVS program as another method to Search the IP Camera:

1. Insert the CD into CD-ROM of your PC, and find the IP Camera configuration tool **SearchDVS.exe**. Copy it to your PC, double click to install. If the software cannot be installed properly, run the path file **credist_x86.exe** founded on the CD.
2. For detailed use of the **Search DVS** software, refer to the **Search DVS User Manual** on the CD.

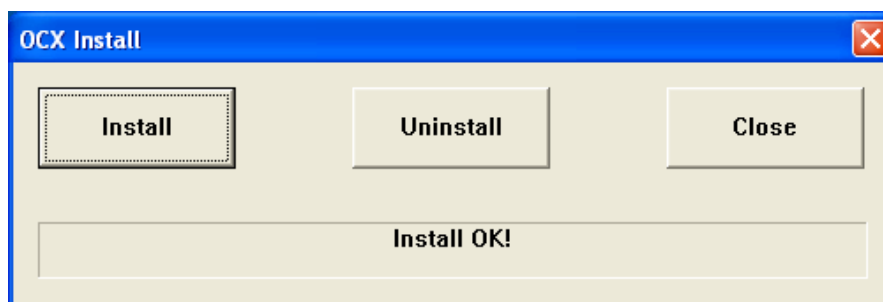
DOWNLOAD AND INSTALL THE PLUG-INS

1. If that it is the first time you use the Browser/ IE (Internet Explorer) to access the IP Camera, additional plug-ins should be installed. Enter the IP Camera address in the address bar of the Browser/ IE (such as: 192.168.1.101), enter logging screen of IP camera:



2. Click left bottom **<Download>**, choose **<Run>** or **<Save>** to download, complete after double-click download files **xoview.exe**.

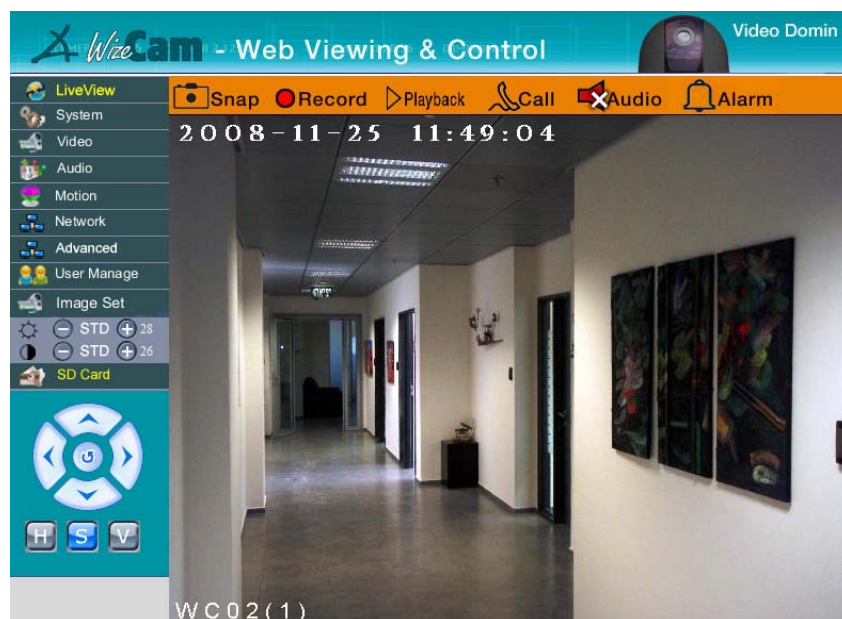
3. Close all Browser/ IE pages and click **<Install>**, the OCX plug-ins will be install automatically, and will complete after prompt **<Install OK>**,is displayed, indicating that the plug-ins installed successfully.



TO LOG ON THE WIZECAM/ IPCAMERA

Enter the IP address of the IP Camera in the address bar of the Browser/Internet Explorer (IE) to log on to the IP Camera. Enter the user name

and password (default user name and password: **admin**), and click **<OK>** to enter the real time video interface.



* For network cameras detailed description please refer to user manual on the CD-ROM.

INSTALLATION

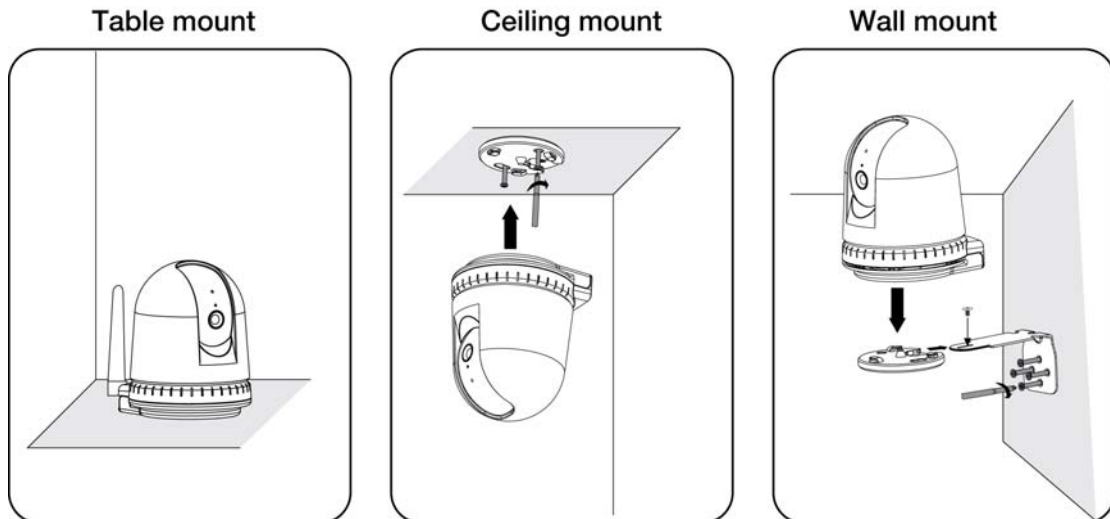


Before installing and using the product, please read the following precautions carefully and make sure they are fully understood.

- * Use only the power adapter provided with the product. Use of unauthorized power adapter may cause damage to your IP Camera.
- * Do not touch the lens of the IP Camera for it may leave fingerprint or stain on the lens and will cause unclear pictures.
- * Do not turn the lens of the IP Camera at will. The optimum focus range has been set before the IP Camera is delivered out of the factory. If you turn the lens, it may cause incorrect focus and vague images.
- * Do not turn the Pan/Tilt by force for it may cause damage to internal components of the Pan/Tilt.
- * The WiseCam IP Camera shall be installed in an indoor environment. It is not rated for Outdoor use.
- * For firmware upgrading or connection with an external alarm, refer to detailed instructions contained on the CD.

Installation

1. This product can be placed or hanged. The user can choose the right way to install it in accordance with the requirements of the installation.
2. Horizontal installation: select a position on a horizontal surface and place the IP Camera directly on the horizontal surface.
3. Suspended installation: Install the bracket to proper position on the wall, or settled upside down under the ceiling; root the special screw to the 1/4" screw hole on the bottom of camera.



FAQ

1. Failure in accessing IP Camera via Browser/IE

Possible cause 1: Network connection?

Solution: Use a PC to access the network to test whether the network access is normal. First remove cable and make sure is not faulty, check network for problems caused by viruses until successful pinging between the IP Camera and PC is archived.

Possible cause 2: IP address used by other device?

Solution: Disconnect the connection between the IP Camera and network, independently connect the IP Camera to PC, and reset the IP address according to proper recommendations.

Possible cause 3: IP address in a different subnet?

Solution: Check the settings of IP address and subnet mask address of the Server, as well as the gateway settings.

Possible cause 4: Any conflict between the physical address over the network and the IP Camera?

Solution: Change the physical address of the IP Camera.

Possible cause 5: Web port changed?

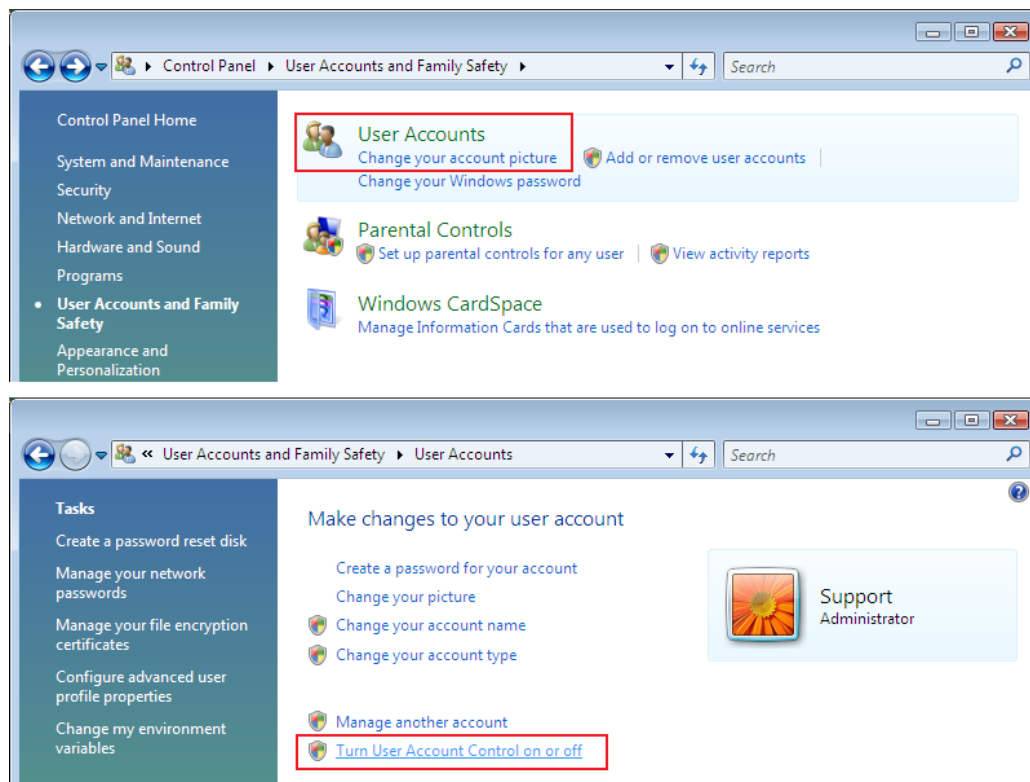
Solution: Contact the administrator to get the relevant port information.

2. Note the following questions in Vista system

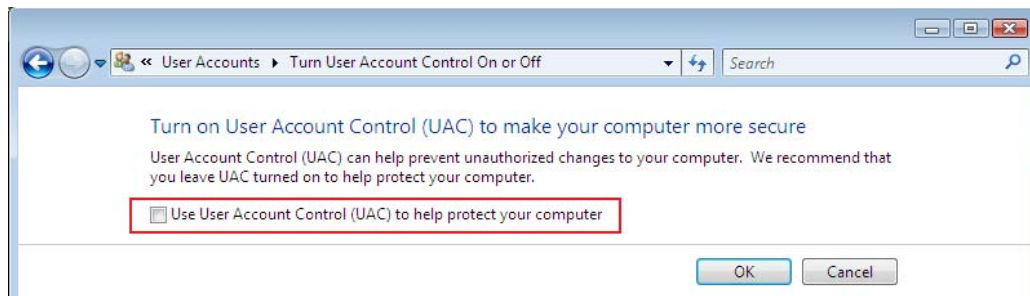
In Vista system, may be unable to access a video file or can it not be saved, the solutions are as follows:

(I) Turn off UAC

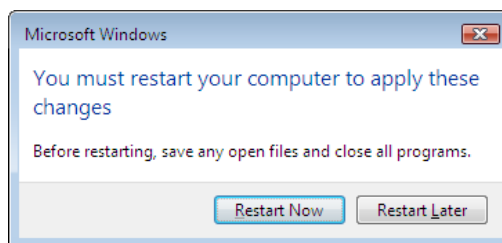
1). Select **<Control Panel-User Accounts and Family Safety-User Accounts - turn User Account Control on or off>**:



2). Cancel **<use User Account Control (UAC) to Help Protect Your Computer>**, then click **<OK>**.

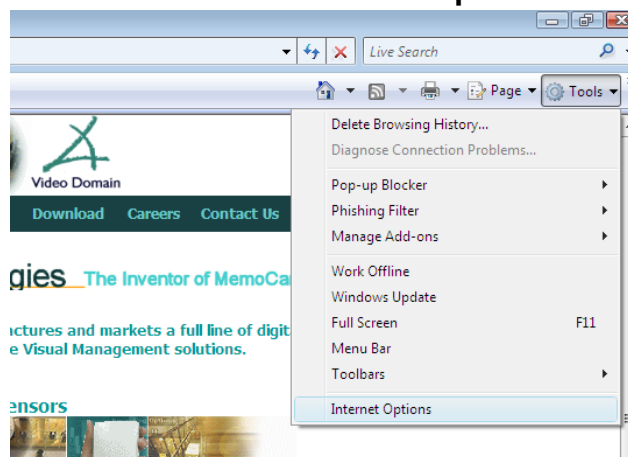


3). Click **<restart now>**, you must restart your computer to apply these changes.

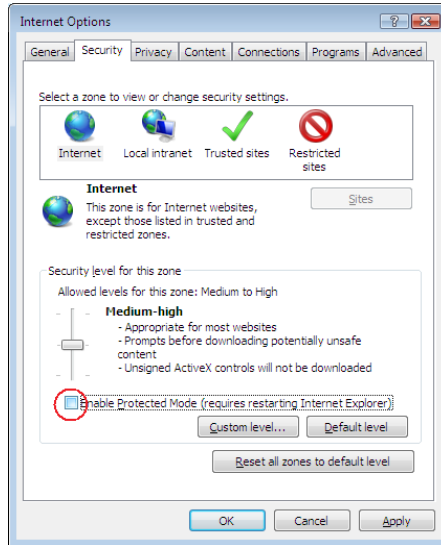


(II) Turn off protected mode

1). Select **<IE Browser – Tools – Internet Options>**:



2). Select **<Security – Internet>**, cancel **<Enable Protected Mode (require restarting Internet Explorer)>**, click **<OK>**, and then restart Browser /Internet Explorer.



3. No display in the Browser/ IE

Possible cause: No OCX plug-in installed. When it is the first time you use the Browser/ IE to access the IP Camera, the OCX plug-in have to be installed.

4. Forgot or lost the password

Solution: Press and hold <RESET> in 5 seconds to restore all parameters to their default values.

Note: Please refrain from pressing the <RESET> key. After resetting, all parameters will be recovered to their default values (excluding the physical address of the network).

FCC INFORMATION

This device complies with part 15 of the FCC Rules. Operation is subject to the following two conditions:

- (1) This device may not cause harmful interference.
- (2) This device must accept any interference received, including interference that may cause undesired operation.

Changes or modifications not expressly approved by the party responsible for compliance could void the user's authority to operate the equipment.

CAUTIONS:

- Do not expose the device to water or other liquids.
- Turn off the Camera/Receiver when the system is not in use.

- Make sure the power adapter is easily accessible.
- Only remove the Camera/Receiver from the main power line by unplugging the adapter.
- Do not cut the DC power cable of the device to fit with another power source.
- Make sure batteries are disposed of properly.

EU Environmental Protection

Electrical waste products (discharged batteries) should not be disposed of with household waste. Please recycle where facilities exist. Check with your Local Authority or retailer for recycling advice.



License and Limited Warranty Agreement

The opening of the packaging of the Software and/or the installation of the Software and/or the use of the Product shall be deemed that you have read and accepted the terms of this License and Limited Warranty Agreement.

If you do not agree to the terms of this agreement, do not use the product.

Promptly return the entire package to the place where you obtained it.

General Terms

You have purchased the right to use the software embedded in some integrated circuits of this Product and on the enclosed disks and/or CD_ROM (the 'Software') and you have purchased the hardware that is the other part of the Product (the 'Hardware'), together (the 'Product') produced by Video Domain Technologies ('VDT').

If the Hardware or the Software does not function properly, please return the Product, together with the copy of your paid receipt, to the place where you obtained it.

License

VDT grants you a license to use the Software subject to terms and conditions of the License agreement hereto. You do not own the Software. VDT and/or third parties remain the sole owner of the Software. The Software and accompanying documentation are proprietary products of VDT and/or third parties, and all title, trade secrets, trade names, trademark patents, copyrights and any other intellectual and proprietary rights, in the Product whether registered or not, remain the sole property of VDT and/or third parties. The intellectual property rights of VDT and/or third parties in the Product are protected by law.

Your rights in the Software are limited to installation of the Software, in the machine-readable form in accordance with the instructions VDT provided you, executing the Software after installation, and making an archive copy(s) in the form provided for backup purposes.

The Software may be used only in conjunction with the Hardware you bought, as an integral part of the Product. Any attempt to determine the source code for the Software; to modify, reprogram, translate, disassemble, decompose, or otherwise reverse engineer the Software; selling sublicense, transferring the Software to anyone else; or allowing any one the access or execute the Software through time sharing services or as a service bureau are forbidden. Any attempt to do any of these forbidden activities will automatically terminate your right to use the Software and our Limited Warranty without any notice from use.

Warranty

The Product, including the media on which the Software is delivered, is warranted to be free of defects in material and workmanship and shall comply with VDT specifications, for a period of 12 months of normal use from the date

of purchase ('the Warranty Period').

The Warranty is void if VDT's instructions of operation, checking and maintenance are ignored, if attempts to repair the Product have been done before the Product is returned to the place where you obtained it.

Responsibility for normal wear and tear is excluded.

The Product is provided 'As Is' and without Warranty, by VDT and/or the distributor and/or the importer, if the importer is not a distributor (each hereinafter the 'Distributor') of the Product, in the country where the product was purchased, or our suppliers, express or implied, including without limitation implied warranty of merchantability of fitness any particular purpose. During the Warranty Period, VDT's and/or VDT's Distributor sole obligation, in tort, contract, or otherwise, shall be to repair or replace the defective Product, at VDT's option. The repair or replacement of the defective Product during the Warranty Period will not extend the Warranty Period. The Warranty does not cover failures resulting from improper operation, connection, or installation. For your convenience, VDT's obligations in connection to Warranty claims, repairs service and instructions have been transferred to VDT's Distributor in your country. The Distributor is responsible for providing you with all necessary services (If you need the details of the Distributor in your country, please contact VDT).

However, if according to law, by law EC directive etc. prevailing in the country/state in which the product was purchased you are entitled a longer warranty period and/or to better minimum undertaking from VDT and/or from the distributor than those granted to you herein, then this document is changed to reflect the said minimum/s.

Disclaimer

VDT and/or the Distributor make no Warranty, Representation or promise expressed or implied that the Hardware and/or the Software or associated documentation will satisfy your requirements and/or that the hardware or software and documentation are without defect or error or that the operation of the hardware and software will uninterrupted or error free.

Limitation of Liability

Except as otherwise restricted by Law, VDT's and/or distributor's aggregate liability arising from or relating to your purchase and/or use of the Hardware and/or Software, the associated documentation or any services provided by VDT and/or the distributor, is limited to the total of all payments made by or for you for the Hardware and Software and documentation.

Neither VDT nor the Distributor or any of their licensors, directors, employees, or any body acting on their behalf shall in any case be responsible or liable for any special, incidental, consequential, indirect or punitive damages, even if advised of the possibility of those damages and/or for lost profits or revenue, loss of contracts, loss of data, costs or re-creating lost data, and/or the cost of any substitute Hardware and/or Software and/or equipment or programs.

Governing Law and Jurisdiction

Except as otherwise restricted by law, this Agreement shall be governed only by, and interpreted, in accordance with the laws of the State of Israel and the exclusive jurisdiction shall be vested to the local courts of Tel Aviv.

Entire Agreement

This Agreement sets forth the entire understanding and rights and duties between you and VDT. This Agreement may be amended only in writing signed by both parties. No person or entity is authorized to modify this Agreement or to make any warranty, representation or promise which is different than, or in addition to, the representation or promises of this agreement.

Waiver

No waiver of any right under this Agreement shall be effective unless in writing, signed by a duly authorized representative of the party to be bound. No waiver of any past or present right arising from any breach or failure to perform shall be deemed to be a waiver of any future right arising under this Agreement.

Severability

If any provision in this Agreement is invalid or unenforceable, that provision shall be construed, limited, modified or, if necessary, severed, to the extent necessary, to eliminate its invalidity or unenforceability, and the other provisions of this Agreement shall remain unaffected.

Support

For support issues please e-mail: support@vdomain.com